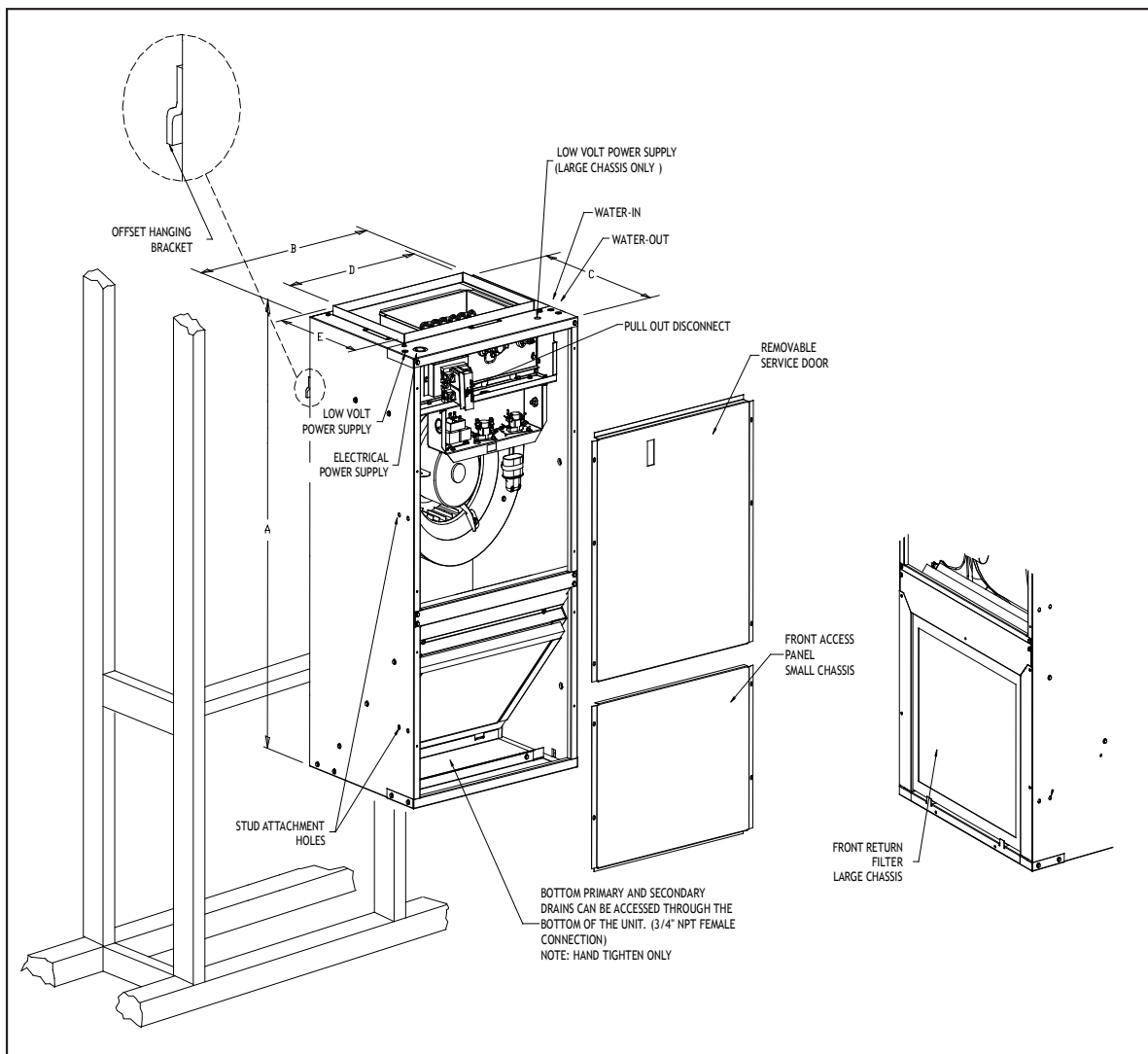


AIR HANDLER DIMENSIONS

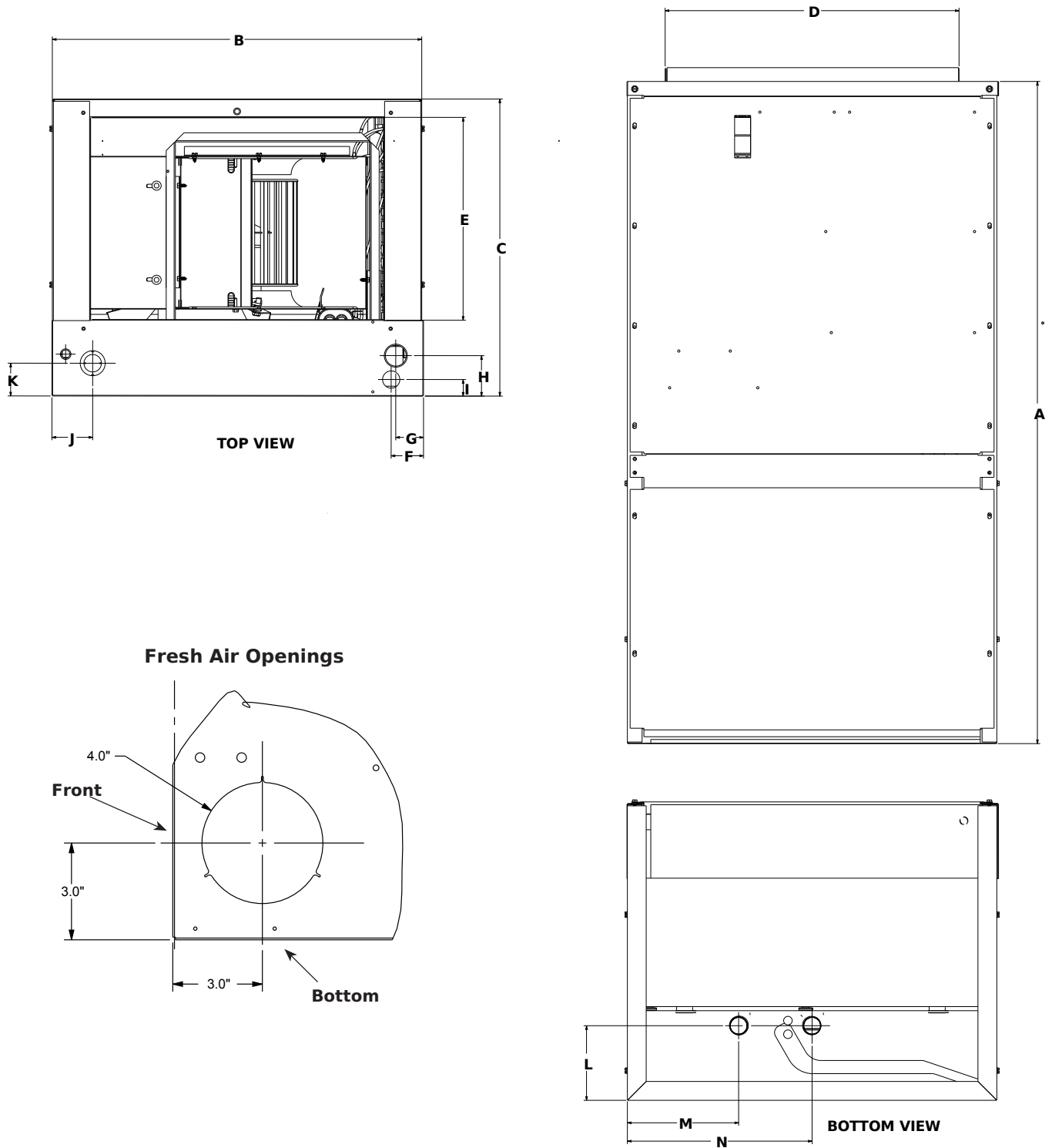
Note - Once installed, top of unit must be level or slightly tilted back to ensure proper condensate drainage.



| Small Chassis (ZAH018-024) | |
|-------------------------------|-----------------------------------|
| A | 36" |
| B | 20 ³ / ₁₆ " |
| C | 16 ¹ / ₈ " |
| D | 16" |
| E | 11" |
| Filter | 14" x 18" x 1" |

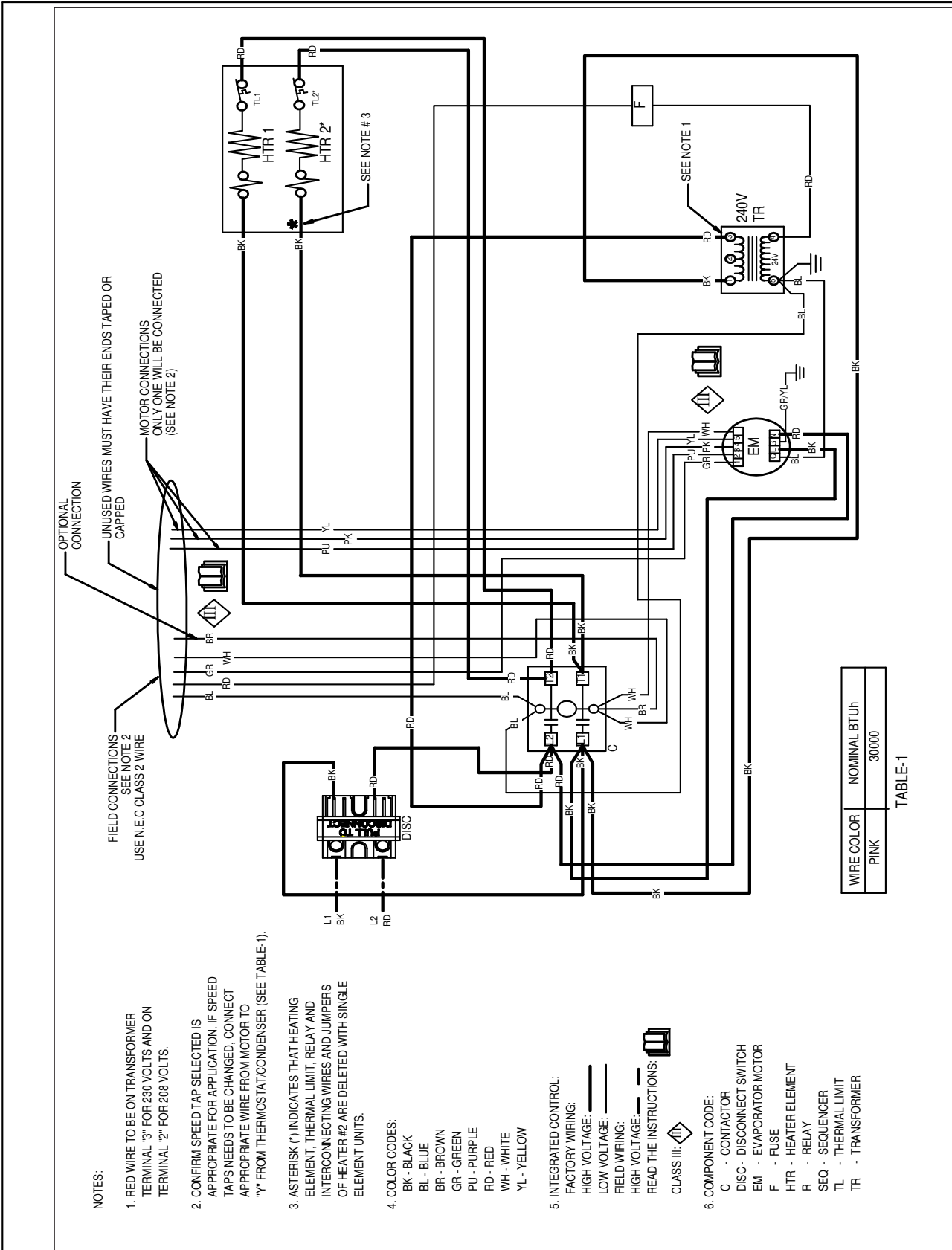
| Large Chassis (ZAH030-036) | |
|-------------------------------|----------------------------------|
| A | 36" |
| B | 24" |
| C | 21" |
| D | 19 ⁷ / ₈ " |
| E | 15 ⁷ / ₈ " |
| Filter (30-37) | 18" x 20" x 1" |

AIR HANDLER DIMENSIONS



| | A | B | C | D | E | F | G | H | I | J | K | L | M | N |
|------------|-----|----------------------------------|----------------------------------|----------------------------------|-----|---------------------------------|---------------------------------|---------------------------------|------|---------------------------------|---------------------------------|----|----|-----|
| ZAH018-024 | 36" | 20 ¹ / ₄ " | 16 ¹ / ₈ " | 16" | 11" | 1 ³ / ₄ " | 1 ¹ / ₂ " | 2 ¹ / ₄ " | 7/8" | 1 ¹ / ₈ " | 1 ³ / ₄ " | 4" | 6" | 10" |
| ZAH030-036 | 36" | 24" | 21" | 19 ⁷ / ₈ " | 16" | 4 ¹ / ₈ " | 1 ¹ / ₂ " | 1 ³ / ₄ " | 2" | 1 ¹ / ₄ " | 2 ³ / ₈ " | 4" | 8" | 12" |

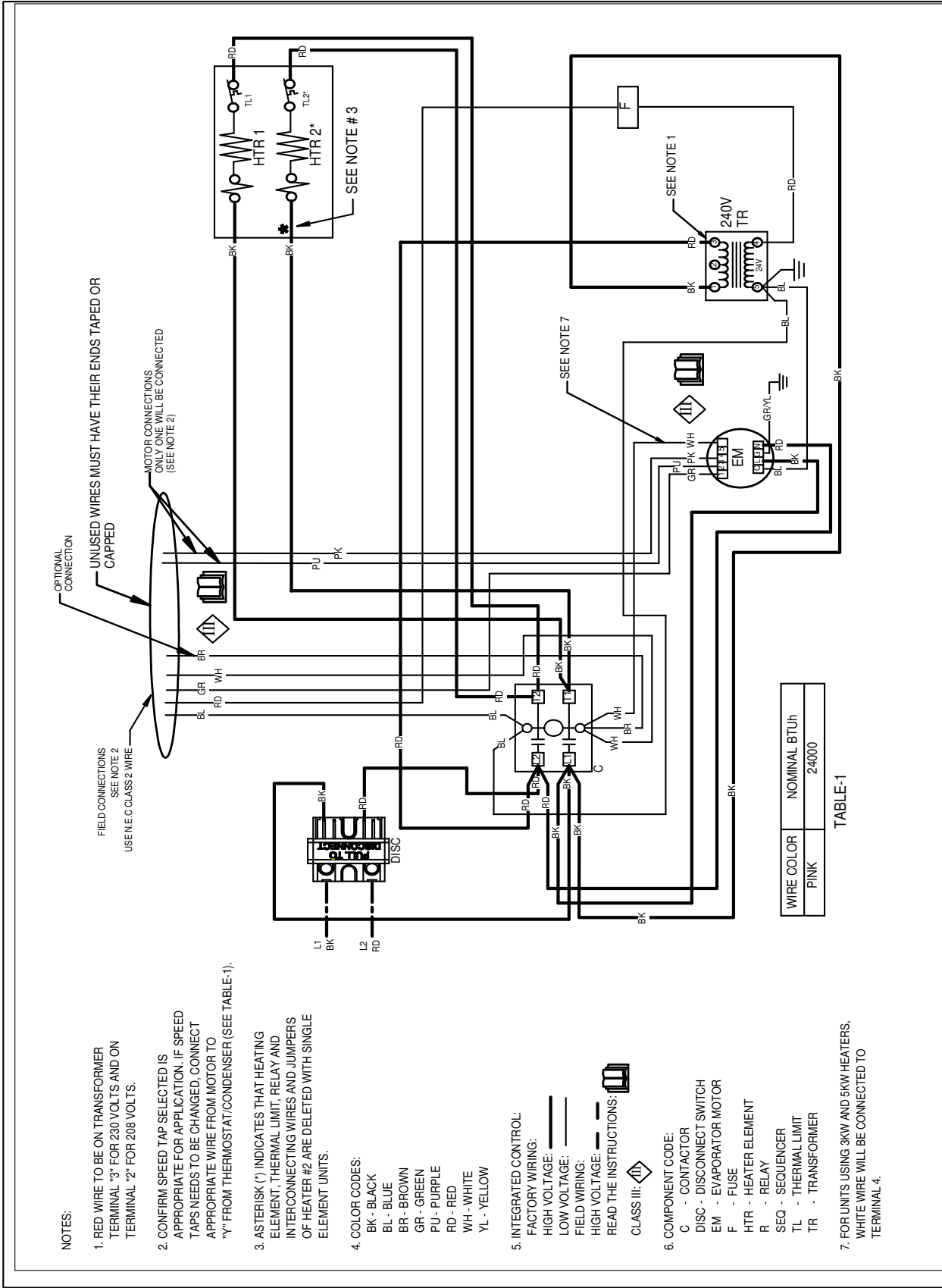
| Model | Motor Speed | CFM Delivered Against External Static Pressure | | | | |
|----------|-------------|--|------|------|------|------|
| | | 0.1" | 0.2" | 0.3" | 0.4" | 0.5" |
| ZAH018W* | T1 | 630 | 602 | 576 | 550 | 521 |
| | T2 | 630 | 602 | 576 | 550 | 521 |
| | T3 | 637 | 609 | 586 | 557 | 531 |
| | T4 | 630 | 602 | 576 | 550 | 521 |
| | T5 | 846 | 824 | 800 | 777 | 756 |
| ZAH024W* | T1 | 630 | 602 | 576 | 550 | 521 |
| | T2 | 630 | 602 | 576 | 550 | 521 |
| | T3 | 784 | 763 | 742 | 728 | 705 |
| | T4 | 630 | 602 | 576 | 550 | 521 |
| | T5 | 846 | 823 | 800 | 777 | 756 |
| ZAH030W* | T1 | 683 | 604 | 525 | 460 | 369 |
| | T2 | 900 | 856 | 803 | 734 | 681 |
| | T3 | 1079 | 1025 | 989 | 949 | 889 |
| | T4 | 944 | 897 | 848 | 783 | 733 |
| | T5 | 1168 | 1127 | 1083 | 1050 | 1005 |
| ZAH036W* | T1 | 1114 | 1072 | 1031 | 982 | 924 |
| | T2 | 1114 | 1072 | 1031 | 982 | 924 |
| | T3 | 1225 | 1191 | 1152 | 1112 | 1071 |
| | T4 | 1287 | 1255 | 1219 | 1183 | 1146 |
| | | | 1360 | 1329 | 1299 | 1264 |




Wiring is subject to change. Always refer to the wiring diagram on the unit for the most up-to-date wiring.

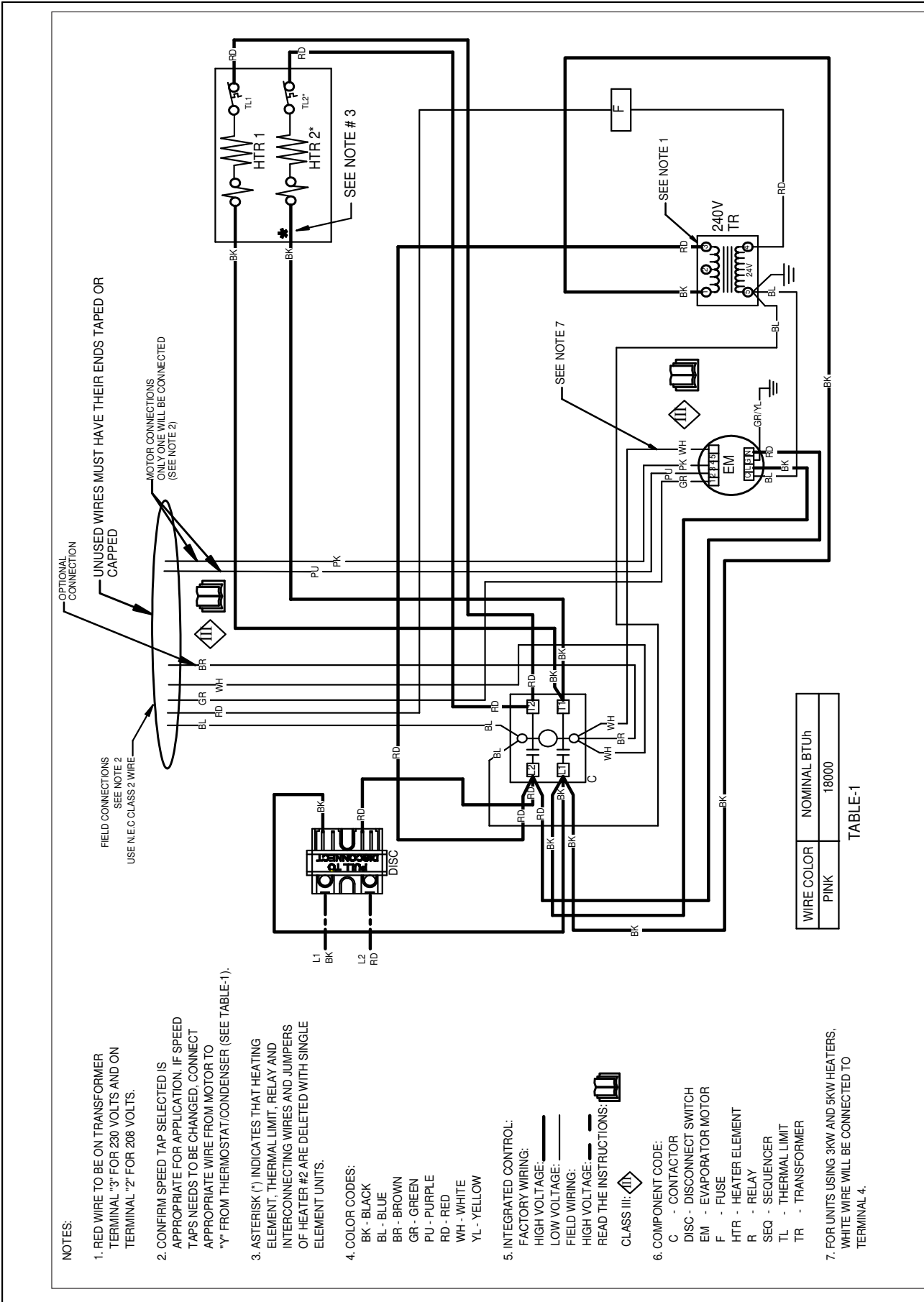
Warning

High Voltage: Disconnect all power before servicing or installing this unit. Multiple power sources may be present. Failure to do so may cause property damage, personal injury, or death.



Warning  **High Voltage:** Disconnect all power before servicing or installing this unit. Multiple power sources may be present. Failure to do so may cause property damage, personal injury, or death.

Wiring is subject to change. Always refer to the wiring diagram on the unit for the most up-to-date wiring.



Wiring is subject to change. Always refer to the wiring diagram on the unit for the most up-to-date wiring.

Warning

High Voltage: Disconnect all power before servicing or installing this unit. Multiple power sources may be present. Failure to do so may cause property damage, personal injury, or death.